

AVAILABLE: HIGH-TECH / MANUFACTURING

TECHSOLVE II BUSINESS PARK

READING ROAD & SEYMOUR AVENUE

HAMILTON COUNTY :: CINCINNATI, OH 45237



SITE HIGHLIGHTS

- + High-Tech / Light Manufacturing development site
- + 12 total acres
 - + 1.08 acre site available
- + Minutes from I-75 and the Norwood Lateral
- + Ample parking
- + Centrally located
- + Less than 1 mile to Interstate 75



CONTACT US

DOUG WHITTEN

First Vice President
+1 513 369 1332
doug.whitten@cbre.com

JEREMY KRAUS

Vice President
+1 513 369 1307
jeremy.kraus@cbre.com

CHRIS CAREY

Associate
+1 513 369 1369
chris.carey@cbre.com

BEAU NIMER

Associate
+1 513 369 1335
beau.nimer@cbre.com



Port of Greater Cincinnati
DEVELOPMENT AUTHORITY



www.cbre.com/techsolveII

CBRE

AVAILABLE TECHSOLVE II BUSINESS PARK



SITE CONCEPT PLAN



© 2017 CBRE, Inc. This information has been obtained from sources believed reliable. We have not verified it and make no guarantee, warranty or representation about it. Any projections, opinions, assumptions or estimates used are for example only and do not represent the current or future performance of the property. You and your advisors should conduct a careful, independent investigation of the property to determine to your satisfaction the suitability of the property for your needs.

Photos herein are the property of their respective owners and use of these images without the express written consent of the owner is prohibited.

www.cbre.com/techsolveII

CBRE

AVAILABLE TECHSOLVE II BUSINESS PARK



AERIAL



© 2017 CBRE, Inc. This information has been obtained from sources believed reliable. We have not verified it and make no guarantee, warranty or representation about it. Any projections, opinions, assumptions or estimates used are for example only and do not represent the current or future performance of the property. You and your advisors should conduct a careful, independent investigation of the property to determine to your satisfaction the suitability of the property for your needs.

Photos herein are the property of their respective owners and use of these images without the express written consent of the owner is prohibited.

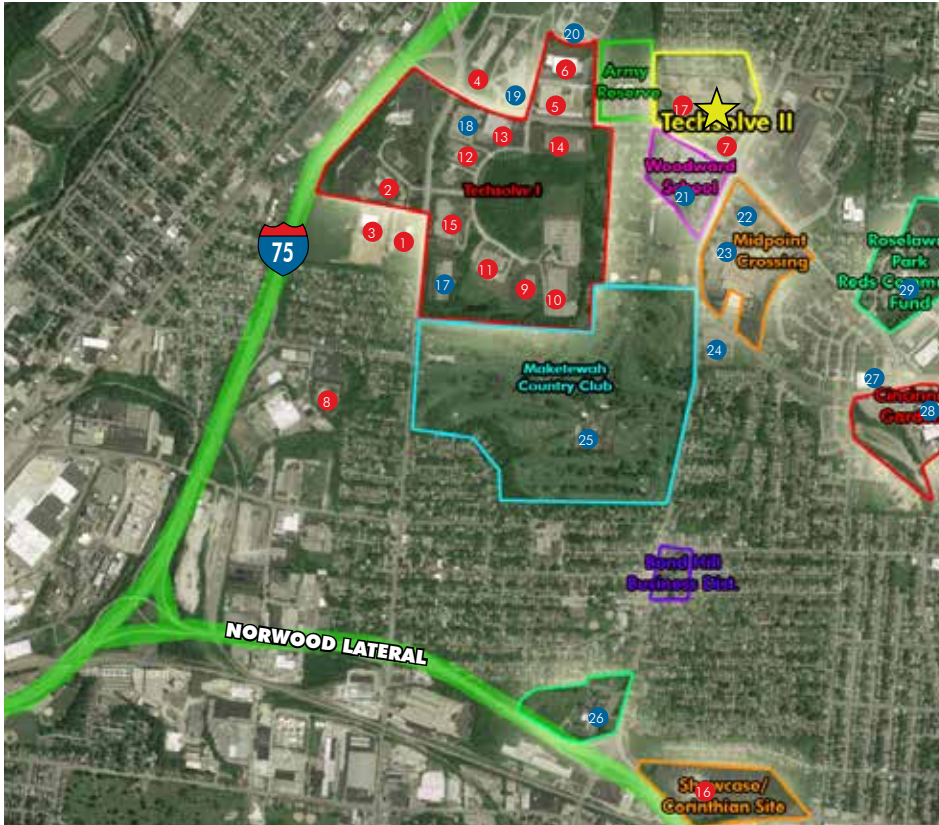
www.cbre.com/techsolveII

CBRE

AVAILABLE TECHSOLVE II BUSINESS PARK



LOCAL MARKET



COMMERCIAL SITES

- 1 Graeter's Ice Cream
- 2 Givaudan Flavors
- 3 American Bottling Company
- 4 Fed Ex
- 5 Eurostampa
- 6 Links Unlimited
- 7 Walgreens
- 8 Messer Construction
- 9 TechSolve
- 10 Quest Diagnostic
- 11 Rough Brothers
- 12 Lamar Signs
- 13 Midwest Grip & Lighting
- 14 Jet Machine
- 15 Collins Ink
- 16 Mercy Health
- 17 Cincinnati Enquirer

CIVIC SITES

- 17 FDA
- 18 National College
- 19 Ohio Department of Transportation
- 20 Summit Behavioral Institute
- 21 Woodward Tech. Career High School
- 22 Allen Temple Church
- 23 Hamilton Co Community Action Agency
- 24 Tryed Stone Baptist
- 25 Maketewah Country Club
- 26 St. Aloysius
- 27 Integrity Hall
- 28 Cincinnati Gardens
- 29 Reds Urban Youth Academy

© 2017 CBRE, Inc. This information has been obtained from sources believed reliable. We have not verified it and make no guarantee, warranty or representation about it. Any projections, opinions, assumptions or estimates used are for example only and do not represent the current or future performance of the property. You and your advisors should conduct a careful, independent investigation of the property to determine to your satisfaction the suitability of the property for your needs.

Photos herein are the property of their respective owners and use of these images without the express written consent of the owner is prohibited.