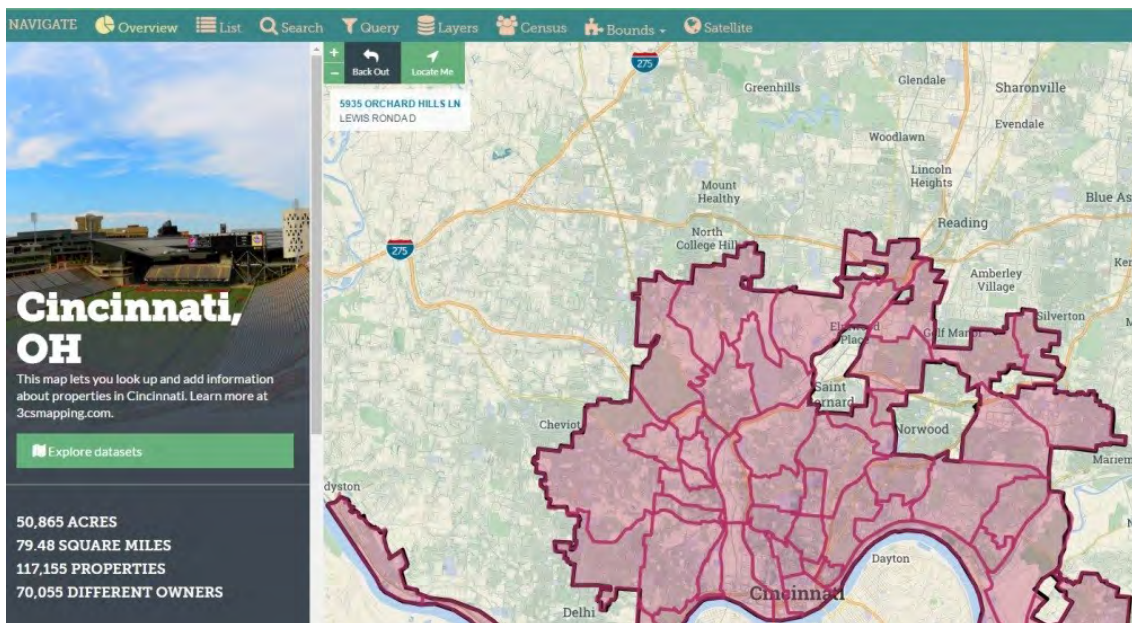


A Project Update Of The Port Of Greater Cincinnati Development Authority

# PORT PROGRESS

PORT DATA PROJECT

## Battling Blight with Big Data



*"...we have so many people who care so much and do so much hard work in neighborhoods, but unless they have information about what's going on with the land grid and who to talk to get something done with a particular property, they can't really improve neighborhoods the way they want to."*

*- Jerry Paffendorf, Co-Founder and CEO - Loveland Technologies*

In the work to revitalize neighborhoods, having access to up-to-date property data is essential to creating best possible policy, planning and land-use decisions. Without it, cities and neighborhoods cannot be certain about where to focus investment for greatest impact. To address this issue, JP Morgan Chase, Loveland Technologies and Western Reserve Land Conservancy teamed up to make property information more accessible in Cleveland, Columbus and Cincinnati through the development of Property Data Dashboards. [3C's Mapping Dashboards](#) will serve up up-to-date property information, making it easier for groups and individuals to identify and take action on property related problems, opportunities, and solutions in their communities.

READ MORE ABOUT THIS NEW PLATFORM

PORT PARTNERSHIPS

## EasterSeals' Building Value and YouthBuild



*“All these people, they're like my family.”*

- Mike Dailey, Student at the Life Skills Center of Cincinnati

EasterSeals is an outstanding community organization which breaks down barriers to employment for people with disabilities, people facing disadvantages, and veterans. Since 2013, the Port Authority has partnered with EasterSeals, specifically with their programs Building Value and YouthBuild. This partnership enables the Port to continue its work in blight remediation while also promoting workforce development.

The kind of transformative change at the heart of the Port's Mission is only achieved through a true community-wide effort working with partners from across the region with the same long-term vision. The Port is thrilled to work in concert with organizations like EasterSeals to transform the Cincinnati region.

[READ MORE](#)

## NEIGHBORHOOD REVITALIZATION

# Evanston: Then and Now



*"You can see people jogging now – that's totally positive. They are running through the same areas where you guys (Port Authority) are rebuilding the houses. You can see it on any*

*given day. The change is positive through what you guys are doing in the neighborhood."*

*- Officer Perry Locke, Cincinnati Police Department*

*FOUR YEARS AGO, as Evanston neighborhood leadership prepared for the demolition of St. Leger apartments and redevelopment of the site, long-time Cincinnati Police Officer Perry Locke articulated his concerns and hopes for the future of the Evanston neighborhood.*

READ MORE ABOUT TRANSFORMATION IN EVANSTON

NEIGHBORHOOD REVITALIZATION

## Evanston Properties define opportunity corner



At the corner of Montgomery and Ruth, two properties are seeing new life on a prominent corner between the Evanston business district and the Landbank's REACH target area. Redevelopment plans are underway for 3341 Montgomery Road, a 6,000

SF mixed-use building. Next door at 1616 Ruth Avenue, a circa-1903 single-family home is fully renovated and on the market ready to welcome a new family to the neighborhood.

[LEARN MORE ABOUT THESE PROPERTIES](#)

PORT PARTNERSHIPS

## Activate a Vacant Space



Do Something Good For Yourself and For Your Neighborhood

The Hamilton County Land Reutilization Corporation (Landbank) owns over 700 properties throughout Hamilton County, many of which are empty lots left underutilized. That doesn't have to be the case. From Percussion Park in Price Hill to Findlay Market Farmstands, area organizations and individuals have shown that programming a vacant lot is a great opportunity to add vibrancy to your neighborhood.

PUBLIC FINANCE

# Nehemiah Manufacturing



*"Nehemiah's growth and success is a great story, and this financing also grew out of our partnerships with REDI and JobsOhio."*

*- Laura Brunner, President & CEO - Port Authority*

At its April meeting, the Port Authority Board of Directors approved the Port using its lease structure to assist in the development of a new 182,000 square foot facility for Nehemiah Manufacturing on a 7.7-acre site in Lower Price Hill. The Port's financing is a portion of the overall incentives and assistance provided to the growing manufacturer by the City of Cincinnati, REDI Cincinnati and others.

LEARN MORE ABOUT THIS PROJECT

# Port Authority Hiring: Manager, Communications and Digital Engagement

The Port Authority seeks a creative, outcome-driven Manager, Communications and Digital Engagement to join the Marketing and Communications Department, playing a key role in elevating our communication initiatives and seeking out new opportunities to convey our voice and value. The Manager is responsible for monitoring and managing our reputation, communicating our impact, and gaining followers, enthusiasts and people inspired to join us in improving quality of life in Hamilton County.

[LEARN MORE AND READ THE JOB DESCRIPTION HERE](#)

---

## In the News

Business Courier: [Port Authority to help finance massive Blue Ash development](#)

Business Courier: [Former Cincinnati school transformed into \(really cool\) apartments](#)

Business Courier: [Port Authority likely to acquire another 15 acres in a Cincinnati neighborhood](#)

Dayton Daily News: [Canadian manufacturer OK'ed for \\$4.3 M in bonds](#)

Business Courier: [P&G, Greater Cincinnati Foundation kick in for Port's big plan to create jobs](#)

For more news about the Port Authority, check out our [Newsfeed](#)





Port of Greater Cincinnati  
DEVELOPMENT AUTHORITY

Copyright © 2017 Port of Greater Cincinnati Development Authority, All rights reserved.

Want to change how you receive these emails?  
You can [update your preferences](#) or [unsubscribe from this list](#)